

» PASSENGER AND LIGHT TRUCK TIRES
NORTH AMERICA

2026 PRODUCT CATALOG



accelera
SPEED 'N STYLE TIRES

ACCELERA TIRES ARE ULTRA-HIGH PERFORMANCE TIRES DESIGNED FOR ELEGANCE AND SAFETY.

Made in Indonesia, Accelera's mindset is that tread life should be long, tires should be fast, and safety and performance should coexist – given the right tire.

Although Accelera makes a complete portfolio of tires consisting of applications for passenger car, light truck, SUV, CUV, and 4x4, our performance tire line-up is where we truly outshine the competition.

We don't compromise, and we don't think you or your customers should either. With Accelera tires, your customers won't have to pick between tire performance, traction, grip, or tread life. Our tire patterns are designed to maximize handling and traction while increasing tire life. Each tire is manufactured using our in-house DeltaMax technology to ensure the highest standard of quality and performance.

PASSENGER

ULTRA-HIGH PERFORMANCE

SPORT UTILITY VEHICLE

4X4

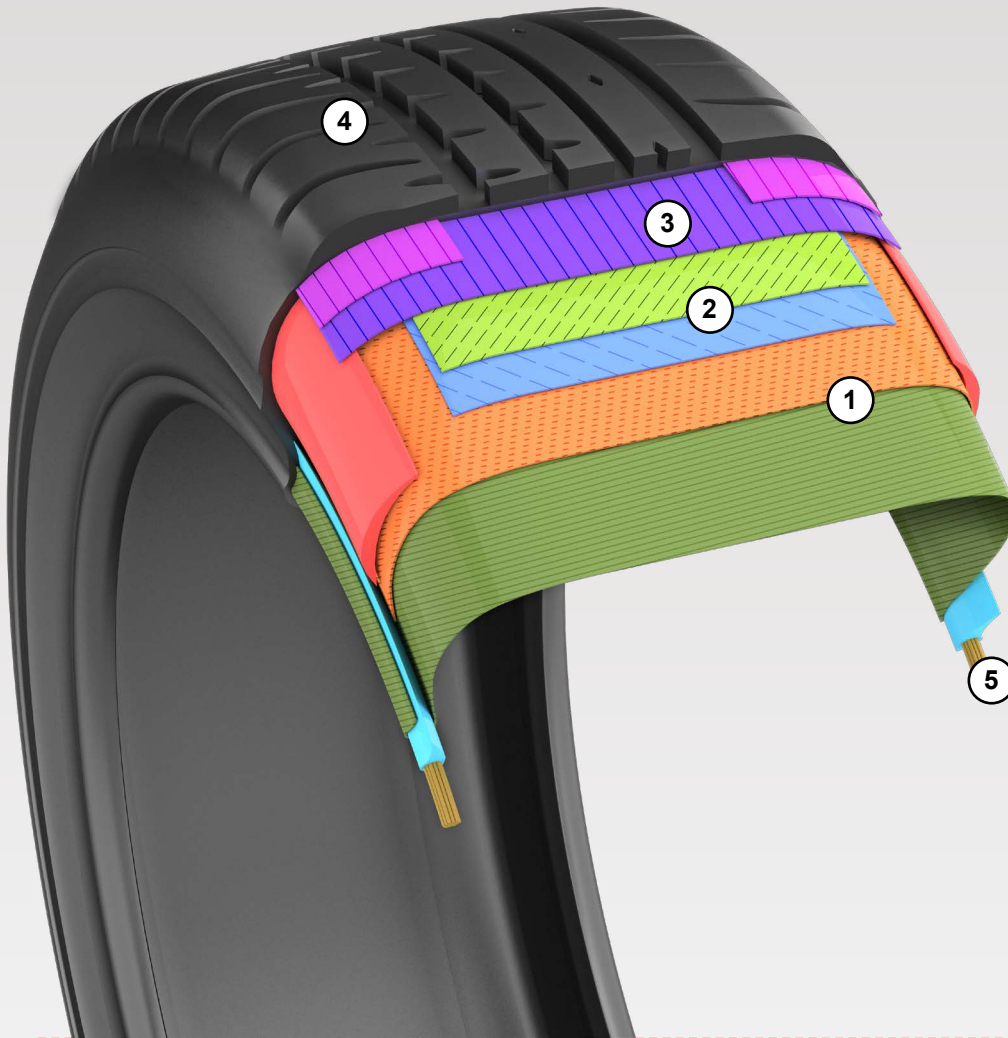
LIGHT TRUCK

COMPETITION

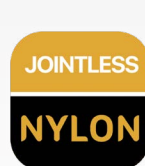
WINTER

ALL-TERRAIN VEHICLE

INSIDE AN ACCELERA TIRE



- 1 2 PLYS HIGH TURN UP POLYESTER CASING**
with HMLS (high modulus and low shrinkage) material to allow high stability and uniformity.
- 2 2 HIGH TENSILE STEEL LAYER BELTS**
at optimized angles for additional safety.
- 3 2 CYCLES SPIRAL JOINTLESS CAP STRIP**
with HMPLS (high melting point with low shrinkage) material to protect steel belts and casing, as well as enhanced stability and prevent deformation of tire shape.
- 4 TRIPLE TREAD COMPOUND**
TREAD CAP: Made with silica compound for low noise, rolling resistance and longevity.
WINGS: Sidewall type compound allows bonding between tread and sidewall.
CUSHION: Extra tacky, low-carbon compound creates adhesion between tread and casing while lowering heat buildup.
- 5 JOINTLESS BEAD WIRE**
allows uniformity, less imbalance and fewer chances of breakage.



WHY ACCELERA?

PERFORMANCE-FOCUSED PORTFOLIO »



Accelera is uniquely positioned as a lifestyle brand particularly within the performance segment. However, don't let its UHP specialization fool you; it also offers a complete portfolio of tires across multiple applications.

ENGINEERED WITH DELTAMAX TECHNOLOGY »



Accelera tires are manufactured using deltaMax technology to ensure the automation of the production process and uses silica compounds that provide immense durability, handling, and traction while increasing tread life.

COMPETITIVE WARRANTY COVERAGE »



Our tires come with a comprehensive warranty program. Tire dealers can use this as a selling tool or as a way to recoup funds for their own warranty programs.



CONTAINER PROGRAM »



Our tires are shipped factory-direct from our manufacturing facility in Jakarta, Indonesia. We partner with domestic dealers who are container-capable for distribution to smaller dealers.

AFTER-SALES SUPPORT AND RESOURCES »



Accelera customers are given access to our dealer portal, allowing them to order point-of-sale materials earned through sales volume, along with tailored training support.



ECOPLUSH

The Eco Plush is Accelerera's all-season tire for passenger cars. Some key features include three main ribs, mini-diagonal grooves, and center ribs with adaptive sipes. The Eco Plush maximizes ride comfort and minimizes noise, making it a solid, reliable choice for your everyday driving needs.



THREE MAIN RIBS provide excellent grip and low noise.



MAIN GROOVE AND MINI-DIAGONAL GROOVES enable rapid water evacuation for improved wet handling and traction.



CENTER RIBS WITH ADAPTIVE SIPES improve rolling and braking, and provide traction while accelerating.

MILEAGE WARRANTY
UP TO
45,000
MILES



UTQG » 400 A A » ALL-SEASON

Rim Diameter	Series	Size	Load & Speed Index	Maximum Load	Max. Inflation Pressure	Rim Width	Section Width	Overall Diameter	Tread Depth
				lbs	psi	inches	inches	inches	32nds
17	65	215/65R17	103H XL	1929	44	6.5	8.7	28.0	10
		195/60R16	89V	1279	44	6.0	7.9	25.2	10
16	60	205/60R16	96V XL	1565	44	6.0	8.2	25.7	10
		215/60R16	99V XL	1709	44	6.5	8.7	26.1	10
	65	225/60ZR16	102W XL	1874	44	6.5	9.0	26.6	10
		205/65R16	95H	1521	44	6.0	8.2	26.5	10
15	60	215/65R16	102V XL	1874	44	6.5	8.7	27.0	10
		165/60R15	82H XL	1047	44	5.0	6.7	22.8	9
		175/60R15	81H	1019	44	5.0	7.0	23.3	9
		185/60R15	84H	1102	44	5.5	7.4	23.7	10
		195/60R15	88H	1235	44	6.0	7.9	24.2	10
	65	205/60R15	91V	1356	44	6.0	8.2	24.7	10
		225/60R15	96V	1565	44	6.5	9.0	25.6	10
		175/65R15	84H	1102	44	5.0	7.0	24.0	10
		185/65R15	88H	1235	44	5.5	7.4	24.4	10
		195/65R15	91H	1356	44	6.0	7.9	25.0	10
14	65	205/65R15	94V	1477	44	6.0	8.2	25.5	10
		215/65R15	100H XL	1764	44	6.5	8.7	26.0	10
	70	205/70R15	96H	1565	44	6.0	8.2	26.3	10
		215/70R15	98H	1653	44	6.5	8.7	26.9	10
13	60	165/60R14	82H XL	1047	44	5.0	6.7	21.8	9
		185/60R14*	82H	1047	44	5.5	7.8	22.4	9
	65	155/65R14	75H	853	44	4.5	6.2	22.0	10
		165/65R14	79T	963	44	5.0	6.7	22.4	10
	70	175/65R14	82H	1047	44	5.0	7.0	23.0	10
		185/65R14	86H	1168	44	5.5	7.4	23.5	10
		165/70R14	81H	1019	44	5.0	6.7	23.1	10
		175/70R14	84T	1102	44	5.0	7.0	23.7	10
80	185/70R14	88H	1235	44	5.5	7.4	24.3	10	
	195/70R14	91H	1356	44	6.0	7.9	24.8	10	
	185/60R13**	80V	992	44	5.5	7.4	21.7	9	
	175/70R13	82H	1047	44	5.0	7.0	22.7	10	
80	70	185/70R13	86H	1168	44	5.5	7.4	23.2	10
		165/80R13	83T	1074	44	4.5	6.5	23.4	10

* Newly added size

** Available in W/LW sidewall style

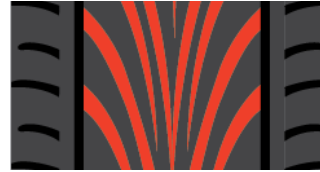
THE SPEEDY MASTER

SIGMA

The Sigma is a dynamic tire designed to maximize performance. A wide shoulder block, multi-cone lateral grooves, and a v-shaped tread pattern offers you a confident and stable ride.



WIDER SHOULDER BLOCK
improves cornering stability and noise reduction.



MULTI-CONE LATERAL GROOVE
enables rapid water evacuation to improve contact on wet surfaces, and maintain low temperatures on dry surfaces.



V-SHAPED TREAD PATTERN
enables stability on high speeds and clears water rapidly to prevent aquaplaning.

UTQG » 400 A A » M+S

Rim Diameter	Series	Size	Load & Speed Index	Maximum Load	Max. Inflation Pressure	Rim Width	Section Width	Overall Diameter	Tread Depth
				lbs	psi				
18	35	215/35ZR18	84W XL	1102	44	7.5	8.6	23.9	10

THE MPV TIRE

GAMMA

The Gamma tire is designed for small minivans. Zigzag shoulder blocks, a dynamic U-Block, and a continuous center rib offer a comfortable and economical drive.



UNIQUE ZIGZAG SHOULDER BLOCKS
enable rapid water evacuation for improved wet handling and traction, while also reducing noise levels.



DYNAMIC U-BLOCK
provides excellent grip on both dry and wet surfaces.



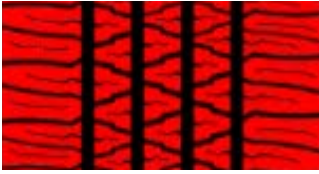
CONTINUOUS CENTER RIB
maintains stability and superior handling on straight-line motion.

UTQG » 400 A A » M+S

Rim Diameter	Series	Size	Load & Speed Index	Maximum Load	Max. Inflation Pressure	Rim Width	Section Width	Overall Diameter	Tread Depth
				lbs	psi				
13	55	165/55R13	70H	739	44	5.0	6.7	20.2	10
	60	175/60R13	77H	908	44	5.0	7.0	21.3	10
	65	165/65R13	77T	908	44	5.0	6.7	21.4	10

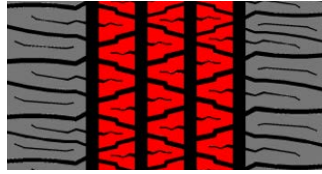
RETROVIA GNT NEW

Retrovia GNT tires are designed for classic and muscle car enthusiasts, combining a vintage-inspired look with Accelera's modern technology. Featuring bold white-letter sidewalls for an authentic retro appearance, they deliver reliable traction in dry and wet conditions, enhanced comfort, improved stability, and long-lasting performance.



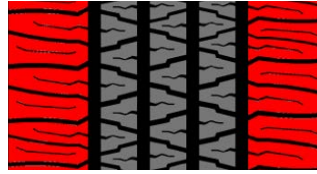
SYMMETRICAL & NON-DIRECTIONAL TREAD PATTERN

The symmetrical and non-directional tread pattern allows for tire cross-rotation, maintaining optimal noise performance and extending tire lifespan.



THREE DURABLE CENTER RIBS

A "V-shaped" design with multi-sipes enhances high-speed stability and provides extra traction.



UNIQUE SHOULDER BLOCKS

Ensure stability when cornering, improve vehicle maneuverability, and enhance steering response.



UTQG » 400 A A » ALL-SEASON

Rim Diameter	Series	Size	Load & Speed Index	Maximum Load	Max. Inflation Pressure	Rim Width	Section Width	Overall Diameter	Tread Depth
				lbs	psi	inches	inches	inches	32nds
15	60	255/60R15	102T	1874	44	7.5	11.0	27.0	10

THE VERSATILE TIRE

PHI

The PHI is an all-season performance tire that offers excellent handling and flexibility on different road surfaces. Some key features include a dynamic medium lateral groove and a straight, medium rib. Whether you're looking for a race tire or a reliable everyday tire, the PHI is an excellent choice because of its versatility, 400-treadwear rating, and excellent grip and cornering abilities.



DYNAMIC MEDIUM LATERAL GROOVE

provides improved wet handling and rolling resistance.



SHOULDER BLOCK

provides better cornering stability and noise reduction.



STRAIGHT, MEDIUM RIB

improves stability and flexibility on dry road surfaces.

UTQG **400 A A** ALL-SEASON

Rim Diameter	Series	Size	Load & Speed Index	Maximum Load	Max. Inflation Pressure	Rim Width	Section Width	Overall Diameter	Tread Depth
				lbs	psi	inches	inches	inches	32nds
22	30	255/30ZR22	95Y XL	1521	44	9.0	10.2	28.1	10
	35	245/35ZR22	97Y XL	1609	44	8.5	9.8	28.8	10
	25	245/25ZR21	86Y XL	1168	44	8.5	9.9	25.8	10
21	30	235/30ZR21	89Y XL	1279	44	8.0	9.4	26.5	10
	35	255/30ZR21	95W XL	1433	44	9.0	10.2	27.0	10
	40	245/40ZR21	100Y XL	1764	44	8.5	9.8	28.7	10
20	30	215/30ZR20	82W	1047	44	7.5	9.2	24.9	10
		225/30ZR20	85Y XL	1135	50	8.0	9.1	25.4	10
		235/30ZR20	88Y XL	1235	44	8.5	9.8	25.3	10
		245/30ZR20	93Y XL	1433	44	8.5	9.8	25.8	10
		255/30ZR20	92Y XL	1389	44	9.0	10.3	26.2	10
		265/30ZR20	94Y	1477	44	9.5	11.6	26.1	10
19	40	255/40ZR20	101Y XL	1819	44	9.0	10.4	28.0	10
	35	215/35ZR19	85Y XL	1135	44	7.5	9.0	24.9	10
	40	215/40ZR19	90Y	1323	44	7.5	8.8	25.5	10
18	45	255/45ZR19	100Y XL	1764	44	9.0	10.2	27.0	10
	45	255/45ZR19	104Y XL	1984	44	8.5	10.0	28.1	10
18	45	205/45ZR18	90Y XL	1323	44	7.0	8.1	25.2	10

The PHI-R is an updated version of the PHI, featuring a revised tread design. This all-season performance tire delivers strong handling and stability, with a triple rib pattern and added sipes for improved steering and reduced noise. Its versatile compound makes it suitable for daily driving or entry-level racing.



TRIPLE RIB

improves high-speed stability and improved steering response.



SHOULDER BLOCKS

provide improved cornering and maneuvering stability.



ADDITIONAL SIPES

allow pattern noise reduction.

UTQG **400 A A** ALL-SEASON

Rim Diameter	Series	Size	Load & Speed Index	Maximum Load	Max. Inflation Pressure	Rim Width	Section Width	Overall Diameter	Tread Depth
				lbs	psi	inches	inches	inches	32nds
21	25	255/25ZR21	88Y XL	1235	44	9.0	10.3	26.0	10
	30	245/30ZR21	91Y XL	1356	44	8.5	9.8	26.8	10

PHI-R

UTQG » 400 A A » ALL-SEASON

Rim Diameter	Series	Size	Load & Speed Index	Maximum Load	Max. Inflation Pressure	Rim Width	Section Width	Overall Diameter	Tread Depth
				lbs	psi	inches	inches	inches	32nds
21	35	245/35ZR21	96Y XL	1565	44	8.5	9.8	27.8	10
18	35	225/35ZR18	87Y XL	1201	44	8.0	9.1	24.2	10
17	35	185/35R17	82V XL	1047	44	6.5	7.4	21.8	10
		225/35ZR17	86Y XL	1168	44	8.0	9.1	23.2	10
	50	235/50ZR17	100Y XL	1764	44	7.5	9.6	26.3	10
	55	245/55ZR17	102W	1874	44	7.5	10.0	27.6	10
40	205/40ZR16	83W XL	1074	44	7.5	8.3	22.4	10	
45	215/45ZR16	90W XL	1323	44	7.0	8.4	23.6	10	
16	50	225/50ZR16	96W XL	1565	44	7.0	9.2	24.9	10
	55	215/55ZR16	97W XL	1609	44	7.0	8.9	25.3	10
		225/55ZR16	99W XL	1709	44	7.0	9.3	25.4	10

THE PHI FOR WIDER FITS

PHI-2

The PHI-2 is just like our PHI tire, but designed for wider-fit vehicles. An all-season performance tire that offers excellent handling and stability, the PHI-2 features a dynamic medium lateral groove and a straight, dry rib. The Accelera PHI-2 is the ideal choice for drivers looking for a solid everyday tire or a tire they can learn to race on.



DYNAMIC MEDIUM LATERAL GROOVE
provides improved wet handling and rolling resistance.



SHOULDER BLOCK
designed to allow better cornering stability and reduced noise.



STRAIGHT DRY RIB
ensures stability and flexibility on the road.

UTQG » 400 A A » ALL-SEASON

Rim Diameter	Series	Size	Load & Speed Index	Maximum Load	Max. Inflation Pressure	Rim Width	Section Width	Overall Diameter	Tread Depth
				lbs	psi	inches	inches	inches	32nds
21	25	295/25ZR21	96Y XL	1565	44	10.5	11.9	26.8	10
	30	275/30ZR21	98Y XL	1653	44	9.5	10.9	27.5	10
20	25	275/25ZR20	91Y XL	1356	44	10.0	11.1	25.4	10
		285/25ZR20	93Y XL	1433	44	10.5	11.6	25.6	10
	30	285/30ZR20	99Y XL	1709	44	10.0	11.4	26.8	10
		295/30ZR20	101Y XL	1819	44	10.5	11.9	27.0	10
19	30	295/30ZR19	100Y XL	1764	44	10.5	11.7	25.6	10
	35	285/35ZR19	103Y XL	1929	44	10.0	11.4	26.9	10

ALPHA

The Alpha is a performance tire with a sporty look. Some key features are lateral grooves combined with center straight grooves, and a straight, dry rib, so you can drive with style on the Alpha.



MEDIUM LARGE BLOCK WITH LATERAL GROOVES
designed with a 45 degree angle to clear water and reduce noise.



CENTER STRAIGHT GROOVES
enable rapid water evacuation and overcome hydroplaning for improved wet handling and traction.



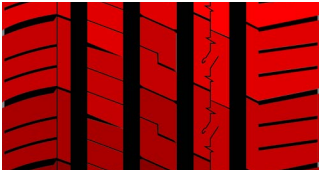
STRAIGHT, DRY CENTER RIB
allows stability and flexibility at high speeds.

UTQG » 400 A A

Rim Diameter	Series	Size	Load & Speed Index		Maximum Load	Max. Inflation Pressure	Rim Width	Section Width	Overall Diameter	Tread Depth
					lbs	psi	inches	inches	inches	32nds
18	35	205/35ZR18	81Y	XL	1019	44	7.5	8.3	23.7	10
14	50	195/50R14	77H		908	44	6.0	7.9	21.7	10
	55	185/55R14	80V		992	44	6.0	7.6	22.0	10

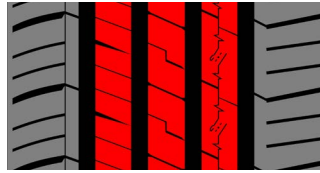
IOTA EVT

Experience a revolutionary drive with the Accelera IOTA EVT, specifically designed to maximize the performance of your electric vehicle. Equipped with advanced technology, including optimized rolling resistance, low noise levels, advanced tread wear, and optimal grip power aligned with with the characteristics of electric vehicles.



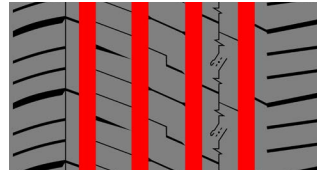
ASYMMETRICAL TREAD PATTERN WITH OPTIMIZED ARRANGEMENT OF PITCH SEQUENCE

allows cross-rotation for a quiet, refined ride throughout the life of the tire.



SOLID THREE CENTER RIB WITH MULTI-SIPES

designed for high-speed stability and extra traction.



FOUR WIDE CIRCUMFERENTIAL GROOVES

provides excellent hydroplaning resistance and wet traction.



UTQG 320 A A

Rim Diameter	Series	Size	Load & Speed Index	Maximum Load	Max. Inflation Pressure	Rim Width	Section Width	Overall Diameter	Tread Depth	
				lbs	psi	inches	inches	inches	32nds	
22	35	285/35ZR22	106W XL	2094	51	10.0	11.5	29.4	9	
		305/30ZR20*	103Y XL	1929	51	11.0	12.6	26.9	9	
20	35	225/35ZR20*	93Y XL	1433	51	8.0	9.3	25.9	9	
		235/35ZR20*	92Y XL	1389	51	8.5	9.7	26.2	9	
		245/35ZR20	95Y XL	1521	51	8.5	10.0	26.5	9	
	40	255/35ZR20*	97Y XL	1609	51	9.0	10.5	26.7	9	
		275/35ZR20*	102Y XL	1874	51	9.5	11.1	27.3	9	
		225/40ZR20	101W XL	1819	44	8.0	9.4	26.9	9	
		245/40ZR20	99Y XL	1709	51	8.5	10.1	27.5	9	
	19	30	45 245/45ZR20	103Y XL	1929	51	8.0	10.0	28.4	9
			255/30ZR19*	91Y XL	1356	51	9.0	10.5	24.9	9
		35	265/30ZR19*	93Y XL	1433	51	7.0	9.6	25.0	9
275/30ZR19*			96Y XL	1565	51	9.5	11.0	25.3	9	
285/30ZR19*			98Y XL	1653	51	10.0	11.4	25.5	9	
225/35ZR19			88Y XL	1235	51	8.0	9.3	24.9	9	
40		235/35ZR19	91Y XL	1356	51	8.5	9.7	25.2	9	
		245/35ZR19	93Y XL	1433	51	8.5	10.0	25.5	9	
		255/35ZR19	96Y XL	1565	51	9.0	10.5	25.7	9	
		265/35ZR19*	98Y XL	1653	51	9.5	10.9	26.0	9	
	275/35ZR19*	100Y XL	1764	51	9.5	11.1	26.3	9		
	225/40ZR19*	93Y XL	1433	51	8.0	9.2	25.8	9		
45	235/40ZR19	96Y XL	1565	51	8.5	9.8	26.2	9		
	245/40ZR19	98Y XL	1653	51	8.5	10.1	26.5	9		
	275/40ZR19*	105Y XL	2039	51	9.5	11.2	27.3	9		
	225/45ZR19	96W XL	1565	51	7.5	9.3	26.7	9		
	235/45ZR19	99Y XL	1709	51	8.0	9.7	27.1	9		
	245/45ZR19	102Y XL	1874	51	8.0	10.0	27.4	9		
18	35	60 175/60R19*	86Q	1168	51	5.0	7.1	27.0	9	
		70 155/70R19*	84Q	1102	51	4.5	6.4	27.3	9	
	40	245/35ZR18	92Y XL	1389	51	8.5	10.0	24.4	9	
		255/35ZR18	94Y XL	1477	51	9.0	10.5	24.7	9	
		265/35ZR18*	97Y XL	1609	51	9.5	10.9	25.0	9	
		275/35ZR18*	99Y XL	1709	51	9.5	11.2	25.2	9	
		205/40ZR18	86Y XL	1168	51	7.5	8.7	24.1	9	
		215/40ZR18	89Y XL	1279	51	7.5	8.9	24.5	9	
		225/40ZR18	92Y XL	1389	51	8.0	9.4	24.8	9	
		235/40ZR18	95Y XL	1521	51	8.5	9.8	25.2	9	
45	245/40ZR18	97Y XL	1609	51	8.5	10.1	25.5	9		
	255/40ZR18*	99Y XL	1709	51	9.0	10.6	25.7	9		
		275/40ZR18*	103Y XL	1929	51	9.5	11.3	26.3	9	

UTQG → 320 A A											
Rim Diameter	Series	Size	Load & Speed Index		Maximum Load	Max. Inflation Pressure	Rim Width	Section Width	Overall Diameter	Tread Depth	
					lbs	psi	inches	inches	inches	32nds	
18	45	215/45ZR18*	93W	XL	1433	51	7.0	8.6	25.3	9	
		225/45ZR18	95Y	XL	1521	51	7.5	9.3	25.7	9	
		235/45ZR18	98Y	XL	1653	51	8.0	9.7	26.1	9	
		245/45ZR18	100Y	XL	1764	51	8.0	10.0	26.4	9	
		255/45ZR18*	103Y	XL	1929	51	8.5	10.4	26.7	9	
		215/50ZR18*	97W	XL	1609	51	7.0	9.1	26.2	9	
	50	225/50ZR18	99W	XL	1709	51	7.0	9.7	26.7	10	
		235/50ZR18	101Y	XL	1819	51	7.5	10.2	27.0	10	
		245/50ZR18*	104W	XL	1984	51	7.5	10.1	27.3	9	
		40	165/40R17*	72V	XL	783	51	6.0	7.2	22.0	9
			195/40R17*	81V	XL	1019	51	7.0	8.1	22.9	9
			205/40ZR17	84W	XL	1102	51	7.5	8.7	23.2	9
215/40ZR17*	87W		XL	1201	51	7.5	8.6	23.5	9		
245/40ZR17*	95W		XL	1521	51	8.5	10.1	24.4	9		
255/40ZR17	98W		XL	1653	51	9.0	10.6	25.1	9		
17	45	205/45ZR17*	88W	XL	1235	51	7.0	8.4	24.0	9	
		215/45ZR17	91W	XL	1356	51	7.0	8.8	24.4	9	
		225/45ZR17	94W	XL	1477	51	7.5	9.3	24.7	9	
		235/45ZR17*	97W	XL	1609	51	8.0	9.6	25.0	9	
		245/45ZR17*	99W	XL	1709	51	8.0	10.0	25.5	9	
		205/50ZR17	93W	XL	1433	51	6.5	9.0	24.9	10	
	50	215/50ZR17	95W	XL	1521	51	7.0	9.4	25.3	10	
		225/50ZR17	98W	XL	1653	51	7.0	9.7	25.7	10	
		245/50ZR17	99W		1709	44	7.5	10.9	26.5	10	
		55	205/55R17	95V	XL	1521	51	6.5	8.7	25.7	10
			215/55ZR17	98W	XL	1653	51	7.0	9.2	26.1	10
			225/55ZR17	101W	XL	1819	51	7.0	9.5	26.5	10
235/55ZR17	103W		XL	1929	51	7.5	10.0	26.9	10		
45	195/45ZR16*		84W	XL	1102	51	6.5	7.9	22.6	9	
	205/45ZR16*		87W	XL	1201	51	7.0	8.3	22.9	9	
	50	165/50R16	77V	XL	908	44	5.0	6.9	22.2	9	
		185/50R16*	81V		1019	51	6.0	7.8	23.0	9	
		195/50R16	88V	XL	1235	51	6.0	8.3	23.5	9	
		205/50ZR16	91W	XL	1356	51	6.5	9.0	23.9	10	
185/55R16*		83V		1074	51	6.0	7.8	23.7	9		
55		195/55R16*	91V	XL	1356	51	6.0	8.1	24.1	9	
	205/55ZR16	94W	XL	1477	51	6.5	8.7	24.6	10		
	235/60ZR16	104W	XL	1984	51	7.0	8.7	24.1	10		
	45	195/45R15*	78V		937	51	9.5	7.9	21.7	9	
		50	175/50R15*	75H		853	51	5.5	7.3	21.7	9
			195/50R15*	82V		1047	51	6.0	7.8	22.4	9
165/55R15			75V		853	44	5.0	7.1	22.2	9	
175/55R15*			77T		908	51	5.5	7.3	22.2	9	
55			185/55R15*	86V	XL	1168	51	6.0	7.9	22.7	9
	195/55R15*		89V	XL	1279	51	6.0	8.1	23.1	9	
	205/55R15*	92V	XL	1389	51	6.5	8.6	23.5	9		

* Newly added sizes

Sizes without * are also available in E-SILENT variant

Upcoming sizes

Rim Diameter	Series	Size	Load & Speed Index
22	30	255/30ZR22	95Y XL
	35	245/35ZR22	97Y XL
21	25	245/25ZR21	86Y XL
		255/25ZR21	88Y XL
	25	295/25ZR21	96Y XL

IOTA EVT

Upcoming sizes

Rim Diameter	Series	Size	Load & Speed Index
21	30	235/30ZR21	89Y XL
		245/30ZR21	91Y XL
		255/30ZR21	93W XL
	35	275/30ZR21	98Y XL
		245/35ZR21	96Y XL
		255/35ZR21	98Y XL
40	245/40ZR21	100Y XL	
20	25	275/25ZR20	91Y XL
		285/25ZR20	93Y XL
	30	215/30ZR20	82W
		225/30ZR20	85Y XL
		235/30ZR20	88Y XL
		245/30ZR20	93Y XL
		255/30ZR20	92Y XL
		275/30ZR20	97Y XL
		285/30ZR20	99Y XL
		295/30ZR20	101Y XL
	35	265/35ZR20	99Y XL
	40	225/40ZR20	94W
		255/40ZR20	101Y XL
		285/40ZR20	108Y XL
30		295/30ZR19	100Y XL
19	35	215/35ZR19	85Y XL
		285/35ZR19	103Y XL
	40	255/40ZR19	100Y XL
		265/40ZR19	102Y XL
		255/45ZR19	104Y XL
18	35	225/35ZR18	87Y XL
	40	265/40ZR18	101Y XL
	45	205/45ZR18	90Y XL
17	35	185/35R17	82V XL
		225/35ZR17	86Y XL
	50	235/50ZR17	100Y XL
	55	245/55ZR17	102W
16	40	205/40ZR16	83W XL
	45	215/45ZR16	90W XL
	50	225/50ZR16	96W XL
	55	215/55ZR16	97W XL
		225/55ZR16	99W XL
15	50	205/50ZR15	89W XL
14	60	205/60R14	88H

IOTA ST68

The Iota ST68 is a modern spin on the original Iota tire designed for SUVs. Engineered for a comfortable ride and longer tire life, this SUV tire is an excellent choice for year-round performance. Some key features include three interlocked block lanes for quick steering response and exclamation-shaped sipes to maintain traction in wet conditions.



MAIN GROOVES
clear water from the surface area in contact with the road to prevent aquaplaning.



THREE INTERLOCKED BLOCK LANES
provide directional stability and quick steering response.



EXCLAMATION SIPES
break thin layering of water to prevent aquaplaning and maintain traction in wet weather conditions.

UTQG » 400 A A

Rim Diameter	Series	Size	Load & Speed Index	Maximum Load	Max. Inflation Pressure	Rim Width	Section Width	Overall Diameter	Tread Depth	
				lbs	psi	inches	inches	inches	32nds	
24	35	295/35ZR24	110W XL	2337	51	10.5	11.9	32.1	10	
		305/35ZR24	112W XL	2469	51	11.0	12.3	32.4	10	
23	35	285/35ZR23	107Y XL	2149	51	10.0	11.4	30.9	10	
		305/35ZR23	111Y XL	2403	51	11.0	12.4	31.1	10	
	40	325/35ZR23	111Y	2403	51	11.5	13.0	31.7	10	
		285/40ZR23	111Y XL	2403	51	10.0	11.4	31.7	10	
25	30	285/25ZR22	95W XL	1521	51	10.5	11.9	27.5	10	
		235/30ZR22	90W XL	1323	51	8.5	9.5	27.6	10	
	30	245/30ZR22	92W XL	1389	51	8.5	9.8	27.8	10	
		255/30ZR22	95W XL	1521	51	9.0	10.2	28.1	10	
	35	265/30ZR22	97W XL	1609	51	9.5	10.6	28.0	10	
		295/30ZR22	103Y XL	1929	51	10.5	11.9	29.0	10	
	35	315/30ZR22	107W XL	2149	51	11.0	12.6	29.5	10	
		255/35ZR22	99W XL	1709	51	9.0	10.2	29.0	10	
	22	35	265/35R22	102V XL	1874	51	9.0	10.7	29.3	10
			275/35ZR22	104Y XL	1984	51	9.5	10.9	29.6	11
40		285/35ZR22	106W XL	2094	51	10.0	11.4	29.9	10	
		265/40ZR22	106Y XL	2094	51	9.5	10.7	30.4	11	
45	40	275/40ZR22	108Y XL	2205	51	9.5	10.9	30.7	10	
		285/40ZR22	110Y XL	2337	51	10.0	11.4	31.0	10	
	45	305/40ZR22	114W XL	2601	51	11.0	12.3	31.6	10	
		275/45ZR22	112W XL	2469	51	9.0	10.7	31.8	10	
50	45	285/45R22	114V XL	2601	51	9.5	11.2	32.1	10	
		305/45ZR22	118W XL	2910	51	10.0	11.9	32.8	10	
	50	275/50R22	111V	2403	51	8.5	11.2	32.9	11	
		315/30ZR21	105W XL	2039	51	11.0	12.6	28.5	10	
	30	325/30ZR21	108Y XL	2205	51	11.5	13.0	28.7	10	
		265/35ZR21	101Y XL	1819	51	9.5	10.7	28.0	10	
		35	275/35ZR21	103Y XL	1929	51	9.5	10.9	28.5	10
			285/35ZR21	105Y XL	2039	51	10.0	11.4	28.9	10
	21	35	295/35ZR21	107Y XL	2149	51	10.5	11.9	29.1	10
			315/35ZR21	111W XL	2403	51	11.0	12.6	29.6	10
		40	235/40R21	98V XL	1653	51	8.5	9.6	27.9	10
			255/40ZR21	102W XL	1874	51	9.0	10.2	29.0	10
40		265/40ZR21	105Y XL	2039	51	9.5	10.7	29.3	10	
		275/40ZR21	107Y XL	2149	51	9.5	10.9	29.6	11	
45		285/40ZR21	109W XL	2271	51	10.0	11.4	30.0	10	
		315/40ZR21	115W XL	2679	51	11.0	12.6	30.9	10	
	265/45ZR21	108W XL	2205	51	9.0	10.5	30.4	11		
	275/45ZR21	110W XL	2337	51	9.0	10.7	30.7	10		
50	285/45ZR21	109W	2271	51	9.5	11.2	31.1	10		
	235/50R21	101V	1819	51	7.5	9.7	29.8	10		
50	255/50ZR21	106W	2094	51	8.0	10.4	31.1	10		

IOTA ST68

UTQG 400 A A

Rim Diameter	Series	Size	Load & Speed Index	Maximum Load	Max. Inflation Pressure	Rim Width	Section Width	Overall Diameter	Tread Depth	
				lbs	psi	inches	inches	inches	32nds	
21	50	275/50R21	113V XL	2535	51	8.5	11.2	31.9	10	
		285/35ZR20	100Y	1764	51	10.0	11.4	27.5	10	
	35	315/35ZR20	110W XL	2337	51	11.0	12.6	28.7	10	
		265/40ZR20	104Y XL	1984	51	9.5	10.7	28.3	10	
	40	275/40ZR20	106Y XL	2094	51	9.5	10.9	28.7	10	
		295/40ZR20	110Y XL	2337	51	10.5	11.9	29.3	10	
	20	45	235/45ZR20	100W XL	1764	51	8.0	9.3	28.3	10
			255/45ZR20	105W XL	2039	51	8.5	10.0	29.1	10
		265/45ZR20	108Y XL	2205	51	9.0	10.5	29.4	10	
		275/45ZR20	110Y XL	2337	51	9.0	10.7	29.8	11	
		50	235/50R20	104V XL	1984	51	7.5	9.6	29.3	10
			245/50ZR20	102Y	1874	51	7.5	10.0	29.7	10
55	255/50ZR20	109W XL	2271	51	8.0	10.4	30.1	11		
	265/50R20	111V XL	2403	51	8.5	10.9	30.5	11		
	285/50ZR20	116W XL	2756	51	9.0	11.7	31.3	10		
	235/55R20	102V	1874	51	7.5	9.6	30.2	10		
60	255/55ZR20	110W XL	2337	51	8.0	10.4	31.0	10		
	275/55R20	117V XL	2833	51	8.5	11.2	31.9	10		
60	275/60R20	115V	2679	51	8.0	11.0	33.0	11		
19	45	275/45ZR19	108W XL	2205	51	9.0	10.7	28.8	10	
		285/45ZR19	111W XL	2403	51	9.5	11.2	29.1	11	
	50	235/50R19	103V XL	1929	51	7.5	9.6	28.3	10	
		255/50ZR19	107W XL	2149	51	8.0	10.4	29.1	10	
	55	265/50ZR19	110Y XL	2337	51	8.5	10.9	29.5	10	
		225/55ZR19	99Y	1709	51	7.0	9.2	28.8	10	
	60	235/55R19	105V XL	2039	51	7.5	9.6	29.2	10	
		245/55ZR19	103Y	1929	51	7.5	10.0	29.6	10	
		255/55R19	111V XL	2403	51	8.0	10.4	30.0	11	
		265/55R19	109V	2271	51	8.5	10.9	30.5	11	
	18	55	255/60R19	109H	2271	51	7.5	10.6	30.6	10
			215/55R18	99V XL	1709	51	7.0	8.9	27.3	10
60		225/55R18	98V	1653	51	7.0	9.2	27.8	10	
		235/55R18	104V XL	1984	51	7.5	9.6	28.1	10	
65		255/55R18	109V XL	2271	51	8.0	10.8	28.5	10	
		235/60R18	107V XL	2149	51	7.0	10.2	29.2	10	
		245/60R18	105V	2039	51	7.0	10.2	29.2	11	
		255/60R18	112V XL	2469	51	7.5	10.7	29.6	11	
70	265/60R18	114V XL	2601	51	8.0	11.2	30.2	11		
	235/65ZR18	106W	2094	51	7.0	10.0	29.8	10		
17	60	255/65R18	111H	2403	51	7.5	10.7	30.6	10	
		215/60R17	100V XL	1764	51	6.5	8.9	27.0	10	
	65	225/60R17	99H	1709	51	6.5	9.4	27.3	10	
		235/60R17	102H	1874	51	7.0	10.0	27.9	10	
	70	255/60R17	110V XL	2337	51	7.5	10.4	28.6	11	
		235/65R17	108V XL	2205	51	7.0	9.8	28.6	10	
16	70	265/70R16	116H XL	2756	51	8.0	11.0	30.2	10	

Upcoming sizes

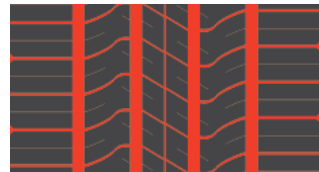
Rim Diameter	Series	Size	Load & Speed Index
22	35	325/35R22	110Y
	45	255/45R22	107Y XL
21	30	295/30R21	102Y XL
	40	295/40R21	111W XL
20	45	285/45R20	112W XL
		295/45R20	114W XL
19	55	275/55R19	115W XL

The Omikron HT is a highway tire for SUV and light truck applications. Some key features are three semi ribs with interlocked blocks, four wide grooves, and a wide tread. The silica compound and tire design ensure a smooth, stable, and quiet ride. The Accelera Omikron HT is also available in LT-metric commercial application tire sizes.

OMIKRON H/T



THREE SEMI RIBS WITH INTERLOCKED BLOCKS maintain stability on the highway, offer driving comfort and a quiet ride.



FOUR WIDE GROOVES drain water rapidly to prevent aquaplaning and enhance performance on wet surfaces.



WIDE TREAD WITH SILICA COMPOUND improves traction. Particularly effective in cold, wet environments.

UTQG 600 A A ALL-SEASON										P METRIC	
Rim Diameter	Series	Size	Load & Speed Index	Maximum Load	Max. Inflation Pressure	Rim Width	Section Width	Overall Diameter	Tread Depth		
				lbs	psi	inches	inches	inches	32nds		
18	60	225/60R18	104H XL	1984	51	6.5	9.1	28.1	10		
		225/65R17	102H	1874	51	7.0	9.0	28.5	10		
17	65	235/65R17	104H	1984	51	7.0	9.4	29.1	11		
		245/65R17	107T	2149	51	7.0	9.8	29.5	11		
		265/70R17	115H	2679	51	8.0	10.7	31.7	13		
16	70	215/70R16	100H	1764	51	6.5	8.7	27.9	11		
		235/70R16	106H	2094	51	7.0	9.4	29.0	11		
		245/70R16	107H	2149	51	7.0	9.8	29.5	11		
		255/70R16	111T	2403	51	7.5	10.2	30.1	12		
		265/75R16	116T	2756	51	7.5	10.5	31.7	13		

Upcoming size

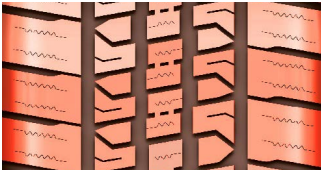
Rim Diameter	Series	Size	Load & Speed Index
17	65	255/65R17	110H

												LT METRIC	
Rim Diameter	Series	Size	PR	Load & Speed Index	Maximum Load (lbs)		Max. Inflation Pressure	Rim Width	Section Width	Overall Diameter	Tread Depth		
					Single	Dual	psi	inches	inches	inches	32nds		
18	65	LT 265/65R18	10	122/119S	3307	2998	80	8.0	11.0	31.4	16		
17	70	LT 265/70R17	10	121/118S	3197	2910	80	8.0	10.7	31.7	16		
	80	LT 235/80R17	10	120/117R	3086	2833	80	6.5	9.3	31.8	16		
16	75	LT 225/75R16	10	115/112S	2679	2469	80	6.0	8.8	29.3	16		
		LT 245/75R16	10	120/116R	3086	2756	80	7.0	9.8	30.5	16		
		LT 265/75R16*	10	123/120S	3417	3086	80	7.5	10.5	31.7	16		
		LT 235/85R16	10	120/116R	3086	2756	80	6.5	9.3	31.7	16		

* Available in BSW & OWL sidewall styles

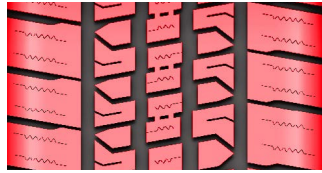
EPSILON H/T

The EPSILON H/T is designed with a unique tread that offers low noise and superior handling on wet conditions to ensure an exceptionally comfortable highway ride.



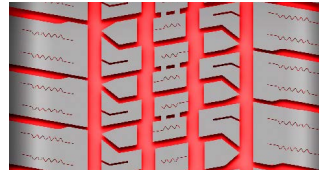
ULTRA-MODERN VARIABLE PITCH TREAD DESIGN

reduces road noise, creating additional driving comfort on highway terrain.



WAVY SIPES

designed for outstanding braking performance on wet conditions.



WIDER CIRCUMFERENTIAL & LATERAL GROOVES

evacuate water quickly to overcome aquaplaning.



UTQG » 600 A A » ALL-SEASON

P METRIC

Rim Diameter	Series	Size	Load & Speed Index	Maximum Load		Rim Width	Section Width	Overall Diameter	Tread Depth
				lbs	psi				
16	65	235/65R16	103H	1929	51	7.0	9.8	27.6	11
	70	225/70R16	103S	1929	51	6.5	9.3	28.0	11

LT METRIC

Rim Diameter	Series	Size	PR	Load & Speed Index	Maximum Load (lbs)		Max. Inflation Pressure	Rim Width	Section Width	Overall Diameter	Tread Depth
					Single	Dual					
16	85	LT 215/85R16	10	115/112R	2680	2470	80	6.0	8.5	30.4	16
		LT 235/85R16	10	120/116R	3085	2755	80	6.5	9.3	31.7	16
15	Flotation	LT 31X10.50R15	6	109R	2270	-	51	8.5	10.6	30.5	16

OMIKRON A/T

The Omikron AT tire is designed to maneuver through all-terrain conditions. Some key features include interlocked and intermediate blocks, two main grooves with notches, and block stepped edges. The Accelera Omikron AT gives you an edge without compromising on comfort, making it a perfect choice for an all-terrain drive. The Accelera Omikron AT is also available in LT-metric commercial application tire sizes.



INTERLOCKED CENTER AND INTERMEDIATE BLOCKS
combined with two sipes assure driving comfort on the highway.



BLOCK STEPPED EDGES AND Z-SHAPED SIPES
enhance traction on off-road surfaces, provide excellent cornering, and prevent irregular wear.



TWO MAIN GROOVES WITH NOTCHES
effectively clear water from the footprint area to eliminate hydroplaning and maintain wet braking.

UTQG 600 A A ALL-SEASON

P METRIC

Rim Diameter	Series	Size	Load & Speed Index	Maximum Load		Max. Inflation Pressure	Rim Width	Section Width	Overall Diameter	Tread Depth
				lbs	psi					
22	40	285/40R22	110H XL	2337	51	10.0	11.4	31.0	13	
		265/50R20*	111S XL	2403	51	8.5	10.9	30.5	12	
20	50	285/50R20*	112H	2469	51	9.0	11.7	31.3	13	
		265/55R20*	113V XL	2535	51	8.5	11.0	31.2	12	
18	60	265/60R18*	110H	2337	51	8.0	11.1	30.2	12	
		285/60R18*	116H	2756	51	8.5	11.8	31.2	13	
17	65	265/65R17*	112T	2469	51	8.0	10.7	30.6	11	
16	70	245/70R16*	111T XL	2403	51	7.0	9.8	29.5	10	
		265/70R16*	112T	2469	51	8.0	10.7	30.6	11	
15	75	215/75R15*	100S	1764	51	6.0	8.8	27.5	12	

* Available in BSW & OWL sidewall styles

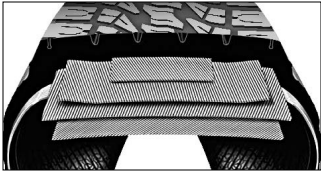
LT METRIC

Rim Diameter	Series	Size	PR	Load & Speed Index	Maximum Load (lbs)		Max. Inflation Pressure	Rim Width	Section Width	Overall Diameter	Tread Depth
					Single	Dual					
20	55	LT 285/55R20	10	122/119R	3307	2998	80	9.0	11.7	32.4	17
18	65	LT 265/65R18	10	122/119S	3307	2998	80	8.0	10.7	31.5	14
	70	LT 275/70R18*	10	125/122S	3638	3307	80	8.0	11.6	33.0	16
17	70	LT 265/70R17*	10	121/118Q	3197	2910	80	8.0	10.7	31.7	14
		LT 285/70R17*	10	121/118R	3197	2910	80	8.5	11.5	32.8	17
	75	LT 245/75R17*	10	121/118R	3197	2910	80	7.0	9.8	31.5	16
		LT 285/75R17*	10	121/118S	3197	2910	80	8.0	11.3	33.9	17
80	LT 235/80R17*	10	120/117R	3086	2833	80	6.5	9.6	31.5	16	
16	75	LT 245/75R16*	10	120/116Q	3086	2756	80	7.0	10.1	30.2	14
		LT 265/75R16*	10	123/120Q	3417	3086	80	7.5	10.9	31.4	14
85	LT 235/85R16*	10	120/116Q	3086	2756	80	6.5	9.6	31.5	14	
15	70	LT 235/70R15*	10	114/110Q	2601	2337	80	7.0	9.4	28.0	12
	75	LT 235/75R15*	10	116/113Q	2756	2535	80	6.5	9.3	28.9	12

* Available in BSW & OWL sidewall styles

EPSILON A/T

The EPSILON A/T is engineered with special base rubber to deliver optimal performance on all types of terrain while ensuring a quiet and comfortable ride.



CAP-BASE CONSTRUCTION WITH SPECIAL BASE RUBBER delivers exceptional comfort and handling in both on & off-road conditions.



AGGRESSIVE BLOCK DESIGN ensures better handling on all types of terrain while reducing road noise.



COUPLING BLOCKS enhance dry grip and steering response; sipes enhance traction in wet conditions.



UTQG » 600 A A » ALL-SEASON				P METRIC						
Rim Diameter	Series	Size	Load & Speed Index	Maximum Load		Max. Inflation Pressure	Rim Width	Section Width	Overall Diameter	Tread Depth
				lbs		psi	inches	inches	inches	32nds
17	70	265/70R17	115S	2679		51	8.0	11.0	31.4	12
		255/70R16	111S	2403		51	7.5	10.6	29.8	12
16	75	245/75R16	111S	2403		51	7.0	10.1	30.2	12

LT METRIC											
Rim Diameter	Series	Size	PR	Load & Speed Index	Maximum Load (lbs)		Max. Inflation Pressure	Rim Width	Section Width	Overall Diameter	Tread Depth
					Single	Dual	psi	inches	inches	inches	32nds
20	55	LT 285/55R20	10	122/119R	3307	2998	80	9.0	11.7	32.4	15
		LT 305/55R20	10	121/118S	3197	2910	65	9.5	12.4	33.2	15
	65	LT 275/65R20	10	126/123S	3748	3417	80	8.0	11.0	34.1	15
16	75	LT 225/75R16	10	115/112R	2679	2469	80	6.0	8.8	29.3	17
		LT 285/75R16	10	126/123R	3748	3417	80	8.0	11.3	32.8	17
15	Flotation	LT 31X10.50R15	6	109Q	2271	-	51	8.5	10.6	30.5	15

Forge a new path with the Accelera Omikron CT. This all-terrain (AT) tire is designed to take you anywhere your vehicle can go. Its ultra-wide cross-section is paired with its clasp-shaped tread blocking system that works to provide you with unparalleled grip in any off or on-road environment. This tire's wide, z-shaped tread grooves are specially designed to maximize mudflow to give you the biting edge you need to pull through the slickest of situations.

OMIKRON C/T



ATTRACTIVE TREAD WITH WIDE CROSS SECTION ensures a longer service lifespan and provides superior traction on all-terrains while giving an aggressive look and feel.



MULTIPLE EDGE BLOCKS prevent slips on rocks while minimizing noise and ensuring a safe and comfortable ride.



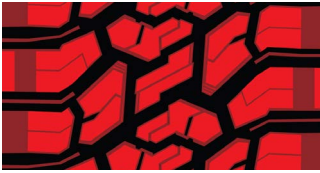
DYNAMIC WIDE GROOVES maximize mud flow, increasing traction in mud and snow conditions.

ALL-SEASON								LT METRIC				
Rim Diameter	Series	Size	PR	Load & Speed Index	Maximum Load (lbs)		Max. Inflation Pressure	Rim Width	Section Width	Overall Diameter	Tread Depth	
					Single	Dual						psi
20	55	LT 275/55R20	8	115/112P	2679	2469	65	8.5	11.2	31.9	15	
18	65	LT 275/65R18	10	119/116Q	2998	2756	65	8.0	11.7	31.9	15	
17	65	LT 225/65R17	8	107/103Q	2149	1929	65	7.0	8.8	28.4	16	
16	70	LT 225/70R16	6	102/99Q	1874	1709	50	6.5	9.0	28.4	13	

OMIKRON R/T

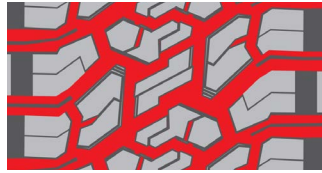
NEW

The Omikron R/T tire is designed for confident off-road driving. Its aggressive tread pattern offers excellent traction on various surfaces, including dirt and gravel. The tire's grooves help remove mud and stones, while a zig-zag design improves grip and stability, especially on steep or uneven trails.



AGGRESSIVE TERRAIN BLOCK DESIGN

Bold, interlocking tread blocks are designed to bite into dirt, gravel, sand, and rocky surfaces, delivering confident traction wherever the terrain takes you.



DEEP & WIDE GROOVES

Actively clear mud and small stones, keeping the tread clean and ready to perform in demanding conditions.



A DYNAMIC ZIG-ZAG CENTER PATTERN

Enhances control, stability, and grip, giving you confidence under hard braking and strong acceleration.



UTQG » 500 A A » ALL-SEASON

P METRIC

Rim Diameter	Series	Size	Load & Speed Index	Maximum Load		Max. Inflation Pressure	Rim Width	Section Width	Overall Diameter	Tread Depth
				lbs	psi	psi				
22	45	285/45R22	114T XL	2601	51	10.5	11.5	31.9	14	
20	40	275/40R20	106H XL	2095	51	10.5	11.1	28.5	14	
	55	275/55R20	117T XL	2833	51	9.5	11.3	31.7	14	
19	55	235/55R19	101H	1819	51	8.5	9.7	29.0	14	

LT METRIC

Rim Diameter	Series	Size	PR	Load & Speed Index	Maximum Load (lbs)		Max. Inflation Pressure	Rim Width	Section Width	Overall Diameter	Tread Depth
					Single	Dual	psi				inches
24	Flotation	LT 33X12.50R24	12	106Q	2095	-	80	12.0	12.7	32.3	20
22	Flotation	LT 33X12.50R22	12	114Q	2600	-	80	11.0	12.4	32.3	20
		LT 35X12.50R22	12	121Q	3195	-	80	11.0	12.3	34.3	20
20	Flotation	LT 33X12.50R20	10	114Q	2600	-	65	11.0	12.3	32.3	20
		LT 33X12.50R20	12	119Q	3000	-	80	11.0	12.3	32.3	20
		LT 35X12.50R20	10	121Q	3195	-	65	11.0	12.0	34.3	20
		LT 35X12.50R20	12	125Q	3640	-	80	11.0	12.0	34.3	20
	55	LT 285/55R20	10	122/119Q	3305	3000	80	10.0	11.4	32.2	17
	60	LT 275/60R20	10	123/120Q	3415	3085	80	9.0	10.5	32.8	17
18	Flotation	LT 33X12.50R18	10	118Q	2910	-	65	11.0	12.0	32.3	20
		LT 35X12.50R18	12	128Q	3968	-	80	11.0	11.9	34.3	20
	70	LT 275/70R18	10	125/122Q	3640	3305	80	9.0	10.4	33.0	17
17	Flotation	LT 33X12.50R17	10	120Q	3085	-	65	11.0	12.0	32.3	20
		LT 35X12.50R17	10	125Q	3640	-	65	11.0	11.9	34.3	20
	70	LT 265/70R17	10	123/120Q	3415	3085	80	9.0	10.1	31.5	17
		LT 285/70R17	10	126/123Q	3750	3415	80	9.5	10.9	32.6	17
		LT 235/80R17	10	120/117Q	3085	2835	80	7.0	8.4	31.6	17
16	75	LT 265/75R16	10	123/120Q	3415	3085	80	8.5	9.8	31.5	17

The MT-01 is an aggressive mud-terrain tire that fits all your off-road needs. Unique tread blocks, a deep tread design, and an open scalloped hump will keep you “grounded” while you’re off-road. Don’t let the aggressive pattern fool you – the Accelera MT-01 is engineered to reduce noise levels and maintain smoothness, no matter how tough the terrain.

MT-01



UNIQUE TREAD BLOCKS WITH WIDE CENTER SIPES increase off-road traction.



OPEN SCALLOPED HUMP TREAD offers superior tracking on off-road surfaces; situated between block slots to drain water rapidly, as well as throw away trapped rocks, mud, and other foreign materials.



DEEP TREAD DESIGN allows strong hold on ground surfaces and maintains grip on loose surfaces.

UTQG » 600 A A » ALL-SEASON

P METRIC

Rim Diameter	Series	Size	Load & Speed Index	Maximum Load	Max. Inflation Pressure	Rim Width	Section Width	Overall Diameter	Tread Depth
22	45	275/45R22	112P XL	2469	51	9.0	10.9	31.9	19
20	50	265/50R20*	111Q XL	2403	51	8.5	10.8	30.4	19
18	60	265/60R18*	110Q	2337	51	8.0	10.8	30.4	19

LT METRIC

Rim Diameter	Series	Size	PR	Load & Speed Index	Maximum Load (lbs)		Max. Inflation Pressure	Rim Width	Section Width	Overall Diameter	Tread Depth	
					Single	Dual						psi
20	Flotation	LT 33X12.50R20*	10	114Q	2601	-	65	10.0	12.6	32.5	20	
		LT 35X12.50R20*	10	121Q	3197	-	65	10.0	12.1	34.4	21	
		LT 37X13.50R20*	10	127Q	3858	-	65	11.0	13.4	36.4	21	
	55	LT 275/55R20*	8	115/112P	2679	2469	65	8.5	11.2	31.9	19	
18	Flotation	LT 35X12.50R18*	10	123Q	3417	-	65	10.0	12.1	34.4	21	
		65	LT 285/65R18*	10	125/122Q	3638	3307	65	8.5	11.8	32.6	19
		70	LT 255/70R18	8	117/114Q	2833	2601	65	7.5	10.4	31.7	19
17	Flotation	LT 35X12.50R17*	10	125Q	3638	-	65	10.0	12.5	34.5	21	
		65	LT 265/65R17*	10	120/117Q	3086	2833	80	8.0	10.9	30.4	19
	70	LT 285/70R17*	10	121/118Q	3197	2910	80	8.5	11.7	32.6	19	
		LT 315/70R17*	10	121/118Q	3197	2910	65	9.5	12.4	34.4	20	
		75	LT 255/75R17	6	111/108Q	2403	2205	65	7.0	10.4	31.7	19
16	70	LT 235/80R17*	10	120/117Q	3086	2833	80	6.5	9.6	31.5	17	
		LT 235/70R16	6	104/101Q	1984	1819	50	7.0	9.4	28.6	17	
	75	LT 285/75R16*	10	126/123Q	3748	3417	36	8.0	11.8	32.6	19	
		LT 315/75R16*	10	127/124Q	3858	3527	65	8.5	12.6	34.4	20	
		85	LT 185/85R16*	8	105/103L	2039	1929	65	5.0	7.5	28.2	17
15	Flotation	LT 235/85R16*	10	120/116Q	3086	2756	80	6.5	9.6	31.5	17	
		LT 28X8.50R15*	6	102Q	1874	-	51	6.0	8.5	27.5	17	
		LT 30X9.50R15*	6	104Q	1984	-	51	7.5	9.6	29.4	19	
		LT 31X10.50R15*	6	109Q	2271	-	51	8.5	10.8	30.5	17	
	75	LT 33X12.50R15*	6	108Q	2205	-	36	10.0	12.6	32.4	20	
		LT 235/75R15*	6	104/101Q	1984	1819	50	8.5	9.4	28.6	17	
80	LT 195/80R15	8	107/105L	2149	2039	65	5.5	8.0	27.1	17		
13	80	LT 165/80R13*	8	94/93Q	1477	1433	65	4.5	6.9	23.1	16	

* Available in BSW & OWL sidewall styles

Upcoming sizes

Rim Diameter	Series	Size	Load & Speed Index
17	60	LT 215/60R17	109/107Q
16	65	LT 215/65R16	103/100Q

Rim Diameter	Series	Size	Load & Speed Index
15	70	LT 205/70R15	107/103Q
12	80	LT 145/80R12	80/78N

THE DURABLE COMMERCIAL TIRE

ULTRA-3

The Ultra-3 is a commercial tire designed for light commercial use. Key features include two wide grooves, twin ribs and circumferential sipes for better traction, along with notched shoulder blocks for stability. The Accelera Ultra-3 is a tough and durable companion you can rely on for your business needs.



TWO WIDE GROOVES combined with a smaller center groove rapidly clear water to prevent hydroplaning.



TWIN RIBS AND CIRCUMFERENTIAL SIPES provide on and off-road traction in dry and wet conditions while enhancing driving comfort.



NOTCHED SHOULDER BLOCKS offer excellent cornering stability.



Rim Diameter	Series	Size	PR	Load & Speed Index	Maximum Load (lbs)		Max. Inflation Pressure	Rim Width	Section Width	Overall Diameter	Tread Depth
					Single	Dual					
16	65	235/65R16C	10	121/119R	3197	2998	65	7.0	9.4	28.0	13
	75	195/75R16C	8	107/105S	2149	2039	69	5.5	7.7	27.5	12
15	70	195/70R15C	8	104/102R	1984	1874	65	6.0	7.9	25.8	12
	LTRC	195R15C	8	106/104R	2094	1984	65	5.5	8.1	27.0	12
14	LTRC	185R14C	8	102/100S	1874	1764	65	5.5	7.4	25.6	12
		195R14C*	8	106/104S	2094	1984	65	5.5	7.8	26.2	12

* Available in BSW & WLW sidewall styles

EXTRA HEAVY-DUTY FOR COMMERCIAL VANS

ULTRA-5

The Ultra-5 is a commercial tire designed for light commercial use. Key features include double semi block ribs with unique sipes, three main grooves for quicker water evacuation, along with tough shoulder blocks that provide good traction.



DOUBLE SEMI BLOCK RIBS WITH UNIQUE SIPES provides handling stability and good traction as well as braking.



TOUGH SHOULDER BLOCKS provides good traction when cornering to prevent understeer or oversteer.



THREE MAIN GROOVES expel water quickly to prevent hydroplaning.

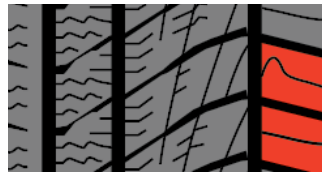


Rim Diameter	Series	Size	PR	Load & Speed Index	Maximum Load (lbs)		Max. Inflation Pressure	Rim Width	Section Width	Overall Diameter	Tread Depth
					Single	Dual					
15	LTRC	195R15C*	8	106/104R	2094	1984	65	5.5	7.8	27.2	12
14	75	205/75R14C**	8	109/107S	2271	2149	65	5.5	8.0	26.1	12
13	LTRC	175R13C	8	97/95R	1609	1521	65	5.0	7.0	24.1	11

* Newly added size ** Available in WLW sidewall style

The X-Grip 4S is Accelera's first all-weather tire. Engineered with a rubber compound that is a fusion between winter tires and all-season tires, this versatile tire can be used in winter conditions, or all-year round. Some key features include a rigid shoulder block, high-density sipes, and a wider groove. The Accelera X-Grip 4S is a great choice for climates with all four seasons so you don't have to worry about changing your tires.

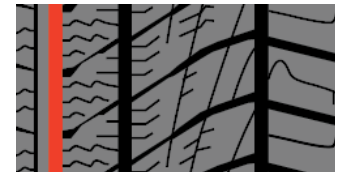
X-GRIP 4S



RIGID SHOULDER BLOCK provides excellent cornering stability.



TWO SEMI BLOCK RIBS WITH HIGH DENSITY SIPES provide superior grip and braking on snow and ice.

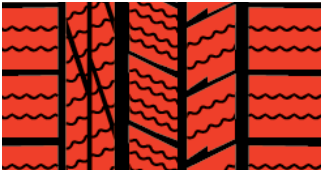


WIDE GROOVE drains water effectively to protect against aquaplaning.

UTQG » 320 A A »										
Rim Diameter	Series	Size	Load & Speed Index		Maximum Load	Max. Inflation Pressure	Rim Width	Section Width	Overall Diameter	Tread Depth
					lbs	psi	inches	inches	inches	32nds
22	35	285/35ZR22	106W	XL	2094	44	10.0	11.4	29.9	11
19	40	235/40ZR19	96Y	XL	1565	44	8.5	9.5	26.4	11
		225/40ZR18	92Y	XL	1389	44	8.0	9.1	25.1	11
		245/40R18	97V	XL	1609	44	8.5	9.8	25.7	11
18	45	235/45R18	98V	XL	1653	44	8.0	9.3	26.3	11
		225/45ZR17	94W	XL	1477	44	7.5	8.9	25.0	11
		225/50ZR17	98W	XL	1653	44	7.0	9.2	25.9	11
17	45	215/45ZR16	90W	XL	1323	44	7.0	8.4	23.6	10
		195/55R16	91V	XL	1356	44	6.0	7.9	24.4	10
		205/55R16	94V	XL	1477	44	6.5	8.4	24.9	10
16	60	205/60R16	96H	XL	1565	44	6.0	8.2	25.7	10
		185/55R15	86H	XL	1168	44	6.0	7.6	23.0	11
		195/55R15	89V	XL	1279	44	6.0	7.9	23.4	10
15	60	195/60R15	92V	XL	1389	44	6.0	7.9	24.2	10
		175/65R14	86H	XL	1168	44	5.0	7.0	23.0	10

X-GRIP N

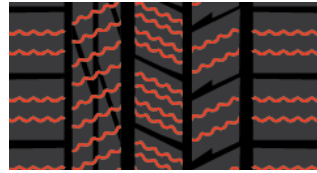
The X-Grip N is a studless winter tire designed to perform in snow and ice conditions. Key features include an asymmetrical design, four longitudinal grooves, and sinusoidal sipes. The X-Grip N tire will ensure your safety while maximizing performance and traction.



ASYMMETRICAL DESIGN
maximizes performance and offers exceptional grip in snow, wet and dry conditions.



FOUR LONGITUDINAL GROOVES
enable quick evacuation of water and snow along with enhancing traction.



SINUSOIDAL SIPES
improve braking and handling performance while preventing sliding on ice and snow.



Rim Diameter	Series	Size	Load & Speed Index	Maximum Load	Max. Inflation Pressure	Rim Width	Section Width	Overall Diameter	Tread Depth
				lbs	psi				
19	45	225/45R19	96V XL	1565	44	7.5	8.9	27.0	11
	55	225/55R19	99V	1709	44	7.0	9.2	28.8	11
18	45	225/45R18	95V XL	1521	44	7.5	8.9	25.9	11
	50	235/50R18	101V XL	1819	44	7.5	9.6	27.3	12
	55	215/55R18	99V XL	1709	44	7.0	8.9	27.3	11
		235/55R18	104V XL	1984	44	7.5	9.6	28.1	11
17	45	205/45R17	88V XL	1235	44	7.0	8.1	24.3	11
		215/45R17	91V XL	1356	44	7.0	8.4	24.6	11
	50	225/45R17	94V XL	1477	44	7.5	8.9	25.0	12
		205/50R17	93V XL	1433	44	6.5	8.4	25.1	11
		225/55R17	101V XL	1819	44	7.0	9.2	26.8	11
16	55	195/55R16	91H XL	1356	44	6.0	7.9	24.4	11
		205/55R16	91H	1356	44	6.5	8.4	24.9	11
	60	215/60R16	95H	1521	44	6.5	8.7	26.1	11
	65	215/65R16	102H XL	1874	44	6.5	8.7	27.0	11
15	55	185/55R15	86H XL	1168	44	6.0	7.6	23.0	11
	65	185/65R15	88H	1235	44	5.5	7.4	24.4	11
		195/65R15	91T	1356	44	6.0	7.9	25.0	11

The X-Grip is a winter tire with additional winter tire studs to add some additional traction during winter road conditions. Some key features include a unique directional tread pattern, edge blocks with high density, a continuous center rib, and an optimum number of studs. The Accelera X-Grip is designed so you can drive confidently during winter's demanding conditions.

X-GRIP



UNIQUE DIRECTIONAL TREAD PATTERN WITH CROSS GROOVES
rapidly clears water to eliminate hydroplaning forces.



EDGE BLOCKS WITH HIGH SIPE DENSITY
provide excellent grip and better traction under snowy and icy conditions.



CONTINUOUS CENTER RIB
enables a self-cleaning function to clean snow from the center groove.



OPTIMUM NUMBER OF STUDS
ensures maximum grip under extremely slippery conditions on severe ice roads.

Rim Diameter	Series	Size	Load & Speed Index	Maximum Load	Max. Inflation Pressure	Rim Width	Section Width	Overall Diameter	Tread Depth
				lbs	psi	inches	inches	inches	32nds
19	55	225/55R19	99V	1709	44	7.0	9.2	28.8	10
		225/40R18	92V XL	1389	44	8.0	9.1	25.1	11
	40	235/40R18	95V XL	1521	44	8.5	9.5	25.4	11
		245/40R18	97V XL	1609	44	8.5	9.8	25.7	11
18	45	225/45R18	95V XL	1521	44	7.5	8.9	25.9	11
		235/45R18	98V XL	1653	44	8.0	9.3	26.3	11
	55	215/55R18	99V XL	1709	44	7.0	8.9	27.3	11
		235/55R18	104V XL	1984	44	7.5	9.6	28.1	11
	45	225/45R17	94V XL	1477	44	7.5	8.9	25.0	11
		205/50R17	93V XL	1433	44	6.5	8.4	25.1	11
17	50	225/50R17	98V XL	1653	44	7.0	9.2	25.9	11
		225/55R17	101V XL	1819	44	7.0	9.2	26.8	11
	65	235/65R17	108H XL	2205	44	7.0	9.4	29.1	11
		195/55R16	91H XL	1356	44	6.0	7.9	24.4	11
	55	205/55R16	91H	1356	44	6.5	8.4	24.9	11
		215/55R16	97V XL	1609	44	7.0	8.9	25.3	11
16		225/55R16	99V XL	1709	44	7.0	9.2	25.7	11
		205/60R16	96H XL	1565	44	6.0	8.2	25.7	11
	65	215/65R16	102H XL	1874	44	6.5	8.7	27.0	11
		185/55R15	86H XL	1168	44	6.0	7.6	23.0	11
	55	195/55R15	89H XL	1279	44	6.0	7.9	23.4	11
		195/60R15	88H	1235	44	6.0	7.9	24.2	11
15	60	185/65R15	88H	1235	44	5.5	7.4	24.4	11
		195/65R15	91T	1356	44	6.0	7.9	25.0	11
14	65	175/65R14	82T	1047	44	5.0	7.0	23.0	11
		185/65R14	86H	1168	44	5.5	7.4	23.5	11

X-TRA GRIPPER

The X-TRA GRIPPER is Accelera's first ATV tire designed especially for drivers looking for extra grip and traction. The outlined tread blocks and gaps between block grooves, coupled with the aggressive tread design make the X-TRA GRIPPER a tough tire that will deliver enhanced performance on various off-road terrains and landscapes.



OUTLINED TREAD BLOCKS
increase traction when driving through extreme terrain like dirt, sand, and snow.



GAP BETWEEN BLOCK GROOVES
provide additional grip on off-road conditions.



Rim Diameter	Series	Size	PR	Load & Speed Index	Maximum Load (lbs)		Max. Inflation Pressure	Rim Width	Section Width	Overall Diameter	Tread Depth
					Single	Dual	psi	inches	inches	inches	32nds
12	Flotation	25X8.00-12	6	670	7	6.5	8.5	25.0	25	25	15
		25X11.00-12	6	900	7	9.0	11.0	25.0	25	25	15

ABOUT ACCELERA'S LIMITED WARRANTY

This limited warranty covers all new Accelera brand replacement radial tires purchased after May 1, 2016, supplied either directly or through an authorized Accelera dealer, which are mounted on passenger cars, vans and light trucks and have been used on the same vehicle that they were originally installed on.

This warranty applies to consumers actually purchasing and using the tires in all of North America, limited to the 48 contiguous states, the District of Columbia, the non-contiguous states of Hawaii and Alaska, and Canada.

A. WORKMANSHIP & MATERIALS

Accelera warrants all eligible tires with a complete DOT identification number against defects in workmanship and materials. Upon examination, if Accelera determines that the tire(s) is not serviceable due to a condition covered by this warranty, it will be replaced by a comparable new Accelera tire as follows:

During the first 2/32" of the original usable tread, or within twelve (12) months from the date of purchase (proof of purchase required) whichever comes first, Accelera will replace the tire with a comparable new Accelera tire 100% free of charge. Applicable fees and taxes and costs of mounting and balancing are payable by the owner.

After the 100% replacement term expires and the tire is still within sixty (60) months of the date of purchase (proof purchase required), credit will be pro-rated towards the purchase of a comparable Accelera tire. The credit will be determined by the percentage of original tread depth remaining on the tire. Applicable fees and taxes and costs of mounting and balancing are payable by the owner.

The authorized Accelera dealer will determine the adjustment cost by multiplying the percentage of original usable tread worn by the current Accelera price in effect at the time of adjustment.

Refer to the example below to obtain the credit percentage:

RTD = Remaining Tread Depth

OTD = Original Tread Depth

If RTD = 5/32" = 5 and OTD = 10/32" = 10

The calculation is:

$$\frac{\text{Remaining Usable Tread Depth}}{\text{Original Usable Tread Depth}} = \frac{5}{10} = 0.5 = 50\%$$

B. MILEAGE TREADWEAR WARRANTY

In addition to the above workmanship and materials warranty, Accelera also warrants that the tread life of all replacement passenger tires or light truck tires, supplied either directly or through an authorized Accelera dealer, will have the following tread wear warranty coverage from the point of original purchase (proof of purchase required):

CATEGORY	PATTERN	MILEAGE COVERED (Effective Mar 2026)
PCR	ECO PLUSH	45,000 miles
PCR	RETROVIA GNT	35,000 miles
UHP	PHI	50,000 miles
UHP	PHI-R	50,000 miles
UHP	PHI 2	50,000 miles
UHP	IOTA EVT	50,000 miles
SUV	IOTA ST68	50,000 miles
4x4	OMIKRON HT	55,000 miles
4x4	OMIKRON AT	60,000 miles
4x4	OMIKRON R/T	50,000 miles

If a tire reaches the end of its usable tread life (2/32") before the stated mileage warranty, it will be replaced by a comparable Accelera tire on a pro-rated basis. The authorized Accelera dealer will determine the adjustment cost by multiplying the percentage of mileage obtained by the current Accelera price in effect at the time of adjustment.

To make a claim, the owner must present the original Accelera Mileage Warranty Card, which records the date of purchase, name of purchaser, original mileage, and identification of the vehicle to an authorized Accelera dealer.

Eligibility For Mileage Tread Wear Warranty:

1. The tires must be rotated every 5,000 - 6,000 miles.
2. The owner must be the original purchaser of the tires and have the original copy of the invoice showing the application mileage.
3. The original purchaser must be the owner of the vehicle on which the tires were originally installed.
4. The tires are worn out evenly across the tread, down to the tread wear indicator (2/32") at which time they are considered to be 100% worn out. The tire must not have more than 2/32" tread depth difference.
5. The Tire Rotation Card must be completed by the servicing dealer.
6. For vehicles equipped with staggered size fitments (different tire sizes on the front and rear axles) which cannot be rotated, the mileage warranty for the front or rear tires will be 50% of the warranted miles specified under the standard Accelera tread wear warranty.

C. ROAD HAZARD REPLACEMENT PROGRAM (Effective Mar 2026)

Accelera offers a road hazard warranty that protects the consumer against non-repairable damage caused by cuts, punctures, snags, and bruises, or impact damages caused by potholes, curbs or other objects on the road.

This Road Hazard Program is included with ECO PLUSH, RETROVIA GNT, PHI, PHI-R, PHI 2, IOTA EVT, IOTA ST68, OMIKRON HT, OMIKRON AT and OMIKRON R/T patterns sold by tire retailers and is administered by ZAFCO International ("Program Administrator").

Note: Tires used for Commercial use and off-road use tires are excluded from the program.

WHAT ARE THE TERMS?

This Program covers eligible Accelera tires for the first 20% of tread wear or 12 months from the date of purchase, whichever occurs first.

Summary of Accelera Limited Tire Warranty Coverage:

CATEGORY	PATTERN	MILEAGE WARRANTY (Effective Mar 2026)	ROAD HAZARD WARRANTY (Effective Mar 2026)
PCR	ECOPLUSH	45,000	YES
PCR	SIGMA	N/A	N/A
PCR	GAMMA	N/A	N/A
PCR	RETROVIA GNT	35,000	YES
UHP	PHI	50,000	YES
UHP	PHI-R	50,000	YES
UHP	PHI-2	50,000	YES
UHP	ALPHA	N/A	N/A
UHP	IOTA EVT	50,000	YES
SUV	IOTA ST68	50,000	YES
4x4	OMIKRON HT	55,000	YES
4x4	EPSILON HT	N/A	N/A
4x4	OMIKRON AT	60,000	YES
4x4	EPSILON AT	N/A	N/A
4x4	OMIKRON CT	N/A	N/A
4x4	OMIKRON R/T	50,000	YES

CATEGORY	PATTERN	MILEAGE WARRANTY (Effective Mar 2026)	ROAD HAZARD WARRANTY (Effective Mar 2026)
4X4	MT-01	N/A	N/A
LTR	ULTRA 3	N/A	N/A
LTR	ULTRA 5	N/A	N/A
ALL-WEATHER	X-GRIP 4S	N/A	N/A
WINTER	X-GRIP N	N/A	N/A
WINTER	X-GRIP	N/A	N/A
ATV	X-TRA GRIPPER	N/A	N/A

OWNER'S OBLIGATION

In order to be eligible for Accelera's Limited Warranty coverage, the owner must:

1. Present the tire to any authorized Accelera dealer.
2. Submit or present the original purchase receipt with documented automobile mileage at time of tire installation and tire dismounting.
3. Submit a tire rotation record showing that all tires have been rotated at least every 5,000 – 6,000 miles (applicable to mileage warranty claims only).
4. Complete and sign an Accelera Warranty Claim Form, which is available at any authorized dealer.
5. Pay the amount due on a new tire, less the amount of credit, including taxes, mounting and balancing charges and/or the cost of other services.

Once tires are returned to Accelera by an authorized dealer and credit has been issued, submitted tires become the property of Accelera.

DISCLAIMER:

THIS IS THE ONLY EXPRESS WARRANTY GIVEN BY ACCELERA, APPLICABLE TO ACCELERA BRAND REPLACEMENT PASSENGER CAR RADIAL AND LIGHT TRUCK RADIAL TIRES. ACCELERA DOES NOT MAKE ANY OTHER EXPRESS WARRANTY OR ANY IMPLIED WARRANTY OF MERCHANTABILITY OR FITNESS FOR A PARTICULAR PURPOSE. ACCELERA DOES NOT AUTHORIZE ANY OTHER PERSON, INCLUDING AUTHORIZED ACCELERA DEALERS OR CAR MANUFACTURERS, OR CAR DEALERS, TO CHANGE THIS WARRANTY OR CREATE ANY OTHER OBLIGATION IN CONNECTION WITH ACCELERA. ACCELERA WILL NOT DO ANYTHING OTHER THAN WHAT IS STATED IN THIS WARRANTY IF AN ANOMALY IS FOUND TO EXIST IN AN ACCELERA BRAND REPLACEMENT PASSENGER CAR OR LIGHT TRUCK RADIAL TIRE. ALL OTHER REMEDIES ARE EXCLUDED, INCLUDING ANY OBLIGATION OR LIABILITY ON THE PART OF ACCELERA FOR CONSEQUENTIAL OR INCIDENTAL DAMAGES (SUCH AS A LOSS OF USE OF VEHICLE, LOSS OF TIME OR INCONVENIENCE) ARISING OUT OF AN ANOMALY.

SOME STATES DO NOT ALLOW THE EXCLUSION OR LIMITATION OF INCIDENTAL OR CONSEQUENTIAL DAMAGES, SO THE ABOVE EXCLUSION MAY NOT APPLY TO YOU. THIS WARRANTY GIVES YOU SPECIFIC LEGAL RIGHTS AND YOU MAY ALSO HAVE OTHER RIGHTS WHICH VARY FROM STATE TO STATE.

DEALER'S OBLIGATION

To claim an adjustment from Accelera, the dealer must first complete a "Claim Adjustment Form" with the required details, which can be requested via email at claims@zafco.com or through our website resources at zafcointernational.com/resources. Each claim must be supported by three (3) medium resolution pictures per tire of the following:

1. Serial and DOT number, labeled as 1-1
2. Damaged portion, labeled as 1-2
3. Complete tire with the tread portion clearly visible, named 1-3; and so forth
4. A copy of the Accelera Limited Warranty Claim Form & Tire Rotation Card (applicable to mileage warranty only)

The completed "Claim Adjustment Form", together with the pictures, must be emailed to claims@zafco.com.

All claims will be settled within thirty (30) working days upon receipt of full details using the instructions stated above.

TIRE REGISTRATION

It is important that you register your Accelera tires promptly upon purchase. Registration is an important safety procedure since it enables the manufacturer to notify you in the event of a product recall. To complete registration, you will need to provide:

1. Your contact information
2. The tire DOT codes located on your tires
3. Your dealer's contact information (where you acquired the tires from)

Please visit our website to register your tires.

SAFETY WARNING

Accelera makes your safety our top priority. It is essential for you to ensure proper use and maintenance of your tires to avoid any serious injury. Here are some safety tips we recommend to mitigate your risk of tire failure:

1. Owners must continue to rotate tires in accordance to their vehicle owner's manual or every 5,000 – 6,000 miles.
2. Tires should be regularly inspected by a qualified tire professional for any signs of damage.
3. Tires should be mounted only by trained professionals. Follow all instructions in the vehicle owner's manual or tire placard in vehicle to avoid under-inflation, overloading and misapplication.
4. Use approved rims and wheels only.
5. Do not spin tires on slippery surfaces such as snow, ice, or mud, or spin in excess of 35 mph (56 kph), as indicated on the speedometer.
6. We recommend replacing any tires that are beyond ten (10) years from their date of manufacture. If your vehicle manufacturer has specific recommendations for tire replacement, you should follow the specific recommendations for that vehicle.

7. Always avoid purchasing used tires. Previous usage may have damaged internal components that may lead to tire failure.

8. We recommend replacing all four tires at the same time.

However, when only two are replaced, the new tires should be on the rear since deeper tread may provide better grip and water evacuation in wet conditions.

9. We recommend routine air pressure checks as per your vehicle manufacturer's specifications.

Any tire, no matter how well constructed, may fail in use as a result of damage or misuse. If you experience any vibrations or ride disturbances, or notice a bulge, bump, or any kind of irregularities, we recommend having your tires evaluated by a qualified tire servicer immediately.

» [ACCELERATIRE.COM](https://www.acceleratire.com)



accelera
SPEED 'N STYLE TIRES

Zafco International LLC
Countyline Corporate Park
4220 W 104th Street, Suite 11
Hialeah, FL 33018

